

# WASILC Report

Volume 1, Issue 2

December 2008

## New Executive Assistant

*Please welcome Barbara Hathaway*

**By Rob Honan**

Executive Director

The SILC is pleased to announce that Barbara Hathaway joined the staff in July as Executive Assistant. She is very busy in the office on a day-to-day basis and has helped me with the coordinating meetings, making staff/Council member travel arrangements smooth, ordering supplies, and teaching me as much ASL (American Sign Language) as my mind can muster.

I am truly excited to have her on board. She has been instrumental in meeting planning and introducing me to many contacts in the Deaf community. For her full bio, go [here](#).

---

## INSIDE THIS ISSUE

- 1 New Executive Assistant
- 1 SILC Members
- 2 Upcoming Events
- 2 SILC Position Papers: Update
- 2 SILC Logo Contest
- 2 State Plan for Independent Living Update

Bookmark this: <http://www.wasilc.org>

## SILC members

Romel Mackelprang, Chair  
*Cheney*

Linda McClain, Vice Chair  
*Spokane*

Devin Beach, *Ellensburg*

Sandra Carr, *Spokane*

Debbie Cook, Ex-Officio (Department of Services for the Blind), *Seattle*

Jana Finkbonner, *Bellingham*

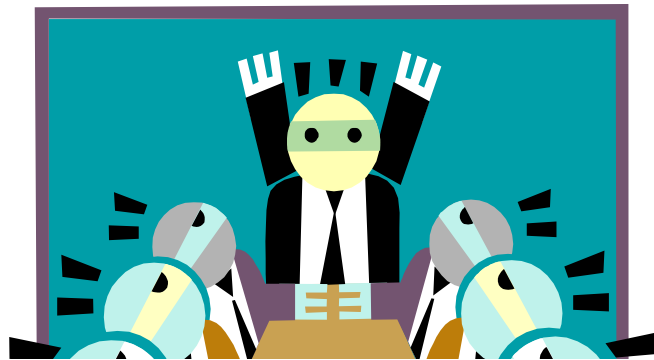
Trina Forest, *Lakewood*

Gilbert Garza, *Toppenish*

Diane Hansen, *Elk*

Al Neely, *Yakima*

Lynnae Rutledge, Ex-Officio (Division of Vocational Rehabilitation), *Olympia*



## CALENDAR OF EVENTS

January 28<sup>th</sup> (noon to 5 PM) and 29<sup>th</sup> (8:30 AM to noon), 2009: **SILC Quarterly Meeting**, Olympia. [Location](#).

---

-  
**2009 LEGISLATIVE RECEPTION:**  
MORE INFORMATION [HERE](#).

---

## SILC LOGO CONTEST

THE STATE INDEPENDENT LIVING IS PROUD TO SPONSOR A [CONTEST](#) TO REPLACE OUR EXISTING LOGO. THE CONTEST IS OPEN IS TO YOUTH WITH DISABILITIES AGES 13-21. ENTRIES MUST BE SUBMITTED TO OUR OFFICE BY JANUARY 16, 2009. PLEASE CLICK ON "CONTEST" ABOVE FOR MORE INFORMATION.

[Washington Centers for Independent Living](#)

[honanrw@dshs.wa.gov](mailto:honanrw@dshs.wa.gov)

ADDRESS CORRECTION REQUESTED

## SILC Position Papers

The SILC has added a new position paper, *Native Americans and Independent Living*, bringing the total number up to nine papers. Please go [here](#) for the complete list.

## State Plan for Independent Living (SPIL) Update

On September 10<sup>th</sup>, CIL directors, members of the SILC, and other community leaders met in Kent to monitor and review the SPIL.

There was a consensus to re-prioritize the seven major areas of the SPIL into a top-tier and a lower, but very important, tier.

The top tier consists of: 1. State Funding, 2. Housing, 3. Deinstitutionalization and 4. Transportation. See notes [from 9/10/08 meeting](#) for more information.

You  
Your email address  
Anywhere in this World

---